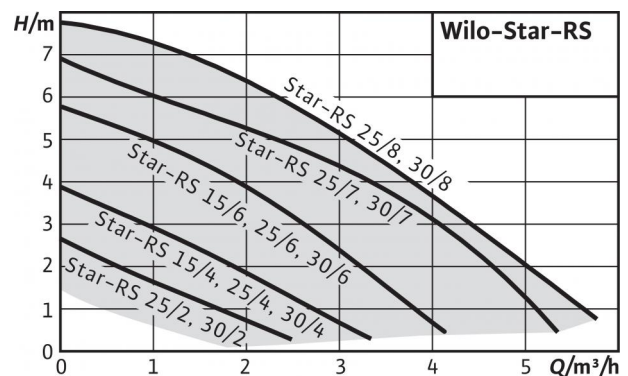


## Series description: Wilo-Star-RS



Similar to figure



### Design

Glandless circulation pump with threaded connection. Preselectable speed stages for power adjustment

### Application

Hot-water heating systems of all kinds, industrial circulation systems, cold water systems and air-conditioning systems

### Type key

Example:  
Star-RS  
25/  
4

**Wilo-Star-RS 25/4**  
Standard pump (screw-end pump)  
Nominal connection diameter Rp  
Nominal delivery head [m] at  $Q = 0 \text{ m}^3/\text{h}$

### Special features/product advantages

- Suitable for any installation location with a horizontal shaft; terminal box in 3-6-9-12 o'clock position
- Three preselectable speed stages for load adjustment
- Easy and safe installation due to practical wrench attachment point on pump body
- Simplified electrical installation due to terminal box with removable threaded cable connection that can be used on both sides; quick connection with spring clips

### Technical data

- Permissible temperature range  $-10^\circ\text{C}$  to  $+110^\circ\text{C}$
- Mains connection 1~230 V, 50 Hz
- Protection class IP 44
- Threaded connection Rp  $\frac{1}{2}$ , Rp 1 or Rp  $\frac{1}{4}$
- Max. operating pressure 10 bar

### Equipment/function

#### Operating modes

- Speed-stage switching

#### Manual functions

- Setting of speed stages (3 speed stages)

### Equipment

- Wrench attachment point on pump body
- Cable lead-in possible on both sides
- Quick connection with spring clips
- Blocking current-proof motor

### Materials

- Pump housing: Grey cast iron
- Impeller: Plastic
- Shaft: stainless steel
- Bearing: Carbon, metal impregnated

### Scope of delivery

- Pump
- Seals
- Installation and operating instructions

### Options

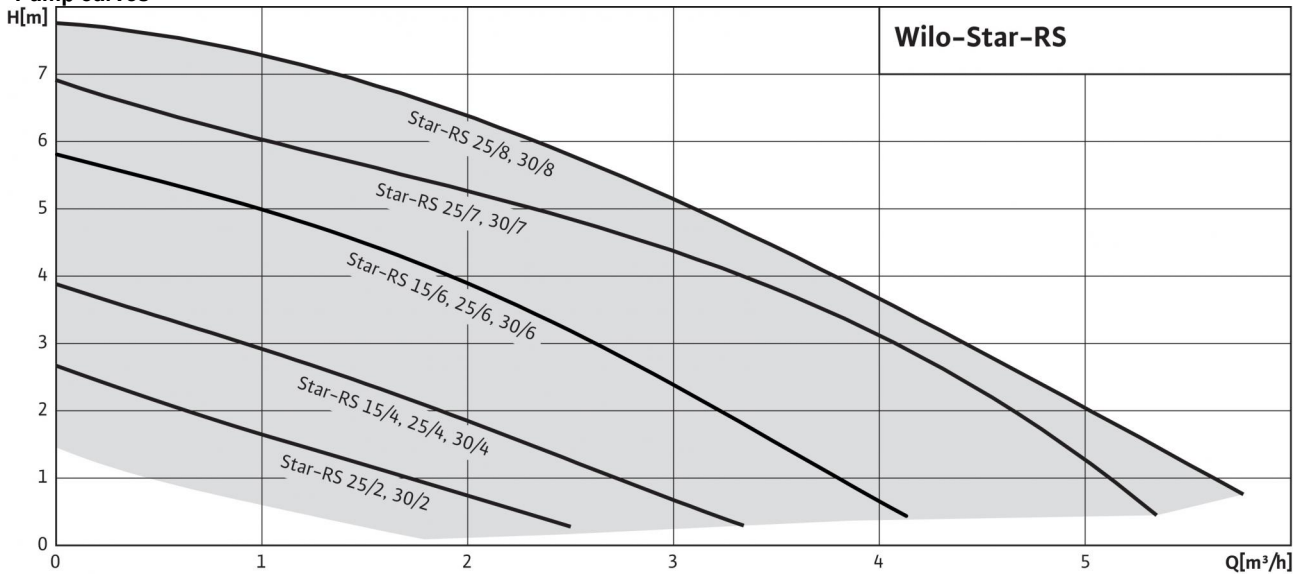
- Version ...RG with housing made of red brass
- Version ...-130 with short overall length of -130 mm

### Accessories

- Screwed connections
- Adapter fittings
- Thermal insulation shells

## Duty chart: Wilo-Star-RS

Pump curves

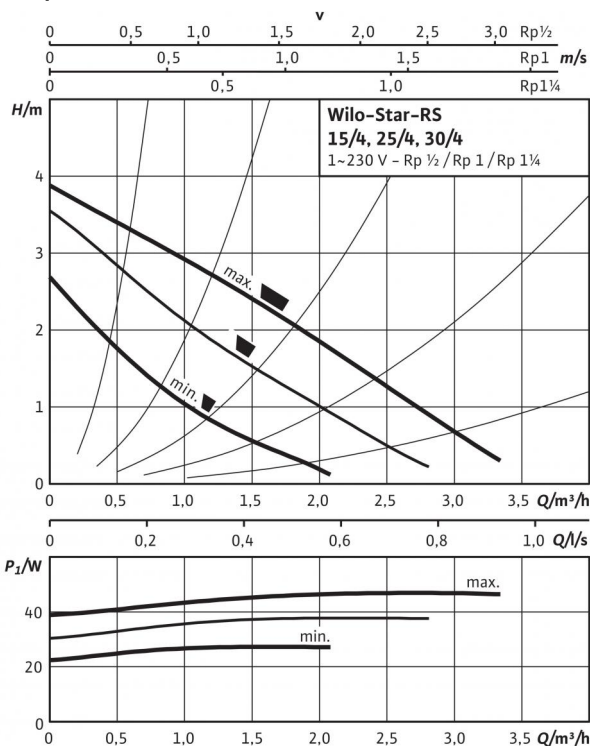


## Product list: Wilo-Star-RS

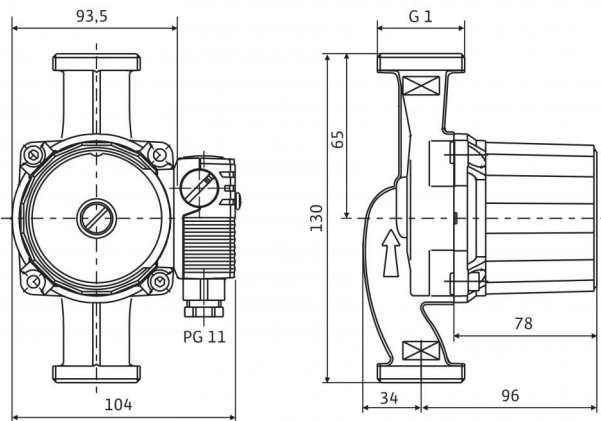
Type	Max. volume flow $Q_{max}$	Max. delivery head $H_{max}$	Thread	Threaded pipe union	Rated pressure $PN$	Overall length $L0$	Mains connection	Gross weight $m$	Pieces per pallet	Art no.
Star-RS 15/4	4 m <sup>3</sup> /h	4 m	G 1	Rp ½	10 bar	130 mm	1~230 V, 50 Hz	2.2 kg	280	4063802
Star-RS 15/6	4 m <sup>3</sup> /h	6 m	G 1	Rp ½	10 bar	130 mm	1~230 V, 50 Hz	2.3 kg	280	4063803
Star-RS 25/2	3 m <sup>3</sup> /h	2 m	G 1½	Rp 1	10 bar	180 mm	1~230 V, 50 Hz	2.5 kg	256	4032952
Star-RS 25/4	4 m <sup>3</sup> /h	4 m	G 1½	Rp 1	10 bar	180 mm	1~230 V, 50 Hz	2.5 kg	256	4032954
Star-RS 25/4-130	4 m <sup>3</sup> /h	4 m	G 1½	Rp 1	10 bar	130 mm	1~230 V, 50 Hz	2.3 kg	280	4033776
Star-RS 25/4-RG	4 m <sup>3</sup> /h	4 m	G 1½	Rp 1	10 bar	180 mm	1~230 V, 50 Hz	2.7 kg	256	4035758
Star-RS 25/6	4 m <sup>3</sup> /h	6 m	G 1½	Rp 1	10 bar	180 mm	1~230 V, 50 Hz	2.7 kg	256	4032956
Star-RS 25/6-130	4 m <sup>3</sup> /h	6 m	G 1½	Rp 1	10 bar	130 mm	1~230 V, 50 Hz	2.5 kg	280	4033782
Star-RS 25/6-RG	4 m <sup>3</sup> /h	6 m	G 1½	Rp 1	10 bar	180 mm	1~230 V, 50 Hz	2.8 kg	256	4035761
Star-RS 25/7	5 m <sup>3</sup> /h	7 m	G 1½	Rp 1	10 bar	180 mm	1~230 V, 50 Hz	2.9 kg	256	4037310
Star-RS 25/8	6 m <sup>3</sup> /h	8 m	G 1½	Rp 1	10 bar	180 mm	1~230 V, 50 Hz	3.6 kg	140	4094258
Star-RS 30/2	3 m <sup>3</sup> /h	2 m	G 2	Rp 1¼	10 bar	180 mm	1~230 V, 50 Hz	2.7 kg	256	4033760
Star-RS 30/4	4 m <sup>3</sup> /h	4 m	G 2	Rp 1¼	10 bar	180 mm	1~230 V, 50 Hz	2.7 kg	256	4033765
Star-RS 30/6	4 m <sup>3</sup> /h	6 m	G 2	Rp 1¼	10 bar	180 mm	1~230 V, 50 Hz	2.8 kg	256	4033770
Star-RS 30/7	5 m <sup>3</sup> /h	7 m	G 2	Rp 1¼	10 bar	180 mm	1~230 V, 50 Hz	3.0 kg	256	4037311
Star-RS 30/8	6 m <sup>3</sup> /h	8 m	G 2	Rp 1¼	10 bar	180 mm	1~230 V, 50 Hz	3.7 kg	140	4094375

## Data sheet: Star-RS 15/4

### Pump curves



### Dimension drawing



Motor horizontal  
Terminal box positions for 3, 6, 9 and 12 o'clock possible  
On delivery, terminal box position is at 3 o'clock

### Approved fluids (other fluids on request)

Heating water (in accordance with VDI 2035)  
Water-glycol mixtures (max. 1:1; above 20% admixture, the pumping data must be checked)

### Permitted field of application

Temperature range at max. ambient temperature +40 °C  
Maximum permissible operating pressure  $P_{max}$

### Pipe connections

Threaded pipe union  
Thread  
Overall length  $L_0$

### Motor/electronics

Electromagnetic compatibility

Emitted interference

Interference resistance

Speed control

Protection class

Insulation class

Mains connection

Speed  $n$

Power consumption  $P_1$

Current consumption  $I$

Motor protection

Threaded cable connection  $PG$

### Materials

Pump housing

Impeller

Pump shaft

Bearing

### Minimum suction head at suction port for avoiding cavitation at water pumping

Temperature  
Minimum suction head at 50 / 95 / 110 °C

### Information for order placements

Make

Art no.

Type

Weight approx.  $m$

Version ...RG with pump housing made of red brass

Version ...L with connection for quick aspirator

•
•

-10...+110 °C
10 bar

Rp 1/2
G 1
130 mm

EN 61800-3
EN 61000-6-3
EN 61000-6-2
-
IP 44
F
1~230 V, 50 Hz
2350 / 2630 / 2720 rpm
28 / 38 / 48 W
0.13 / 0.17 / 0.21 A
Not required (blocking-current proof)
1x11

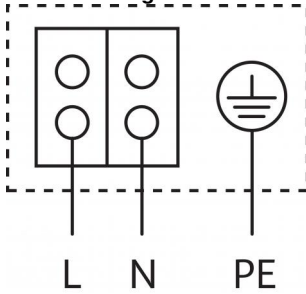
Grey cast iron (EN-GJL-200)
Plastic (PP - 40% GF)
Stainless steel (X40Cr13)
Carbon, metal impregnated

0.5 / 3 / 10 m
----------------

Wilo
4063802
Star-RS 15/4
2.17 kg

Data sheet: Star-RS 15/4

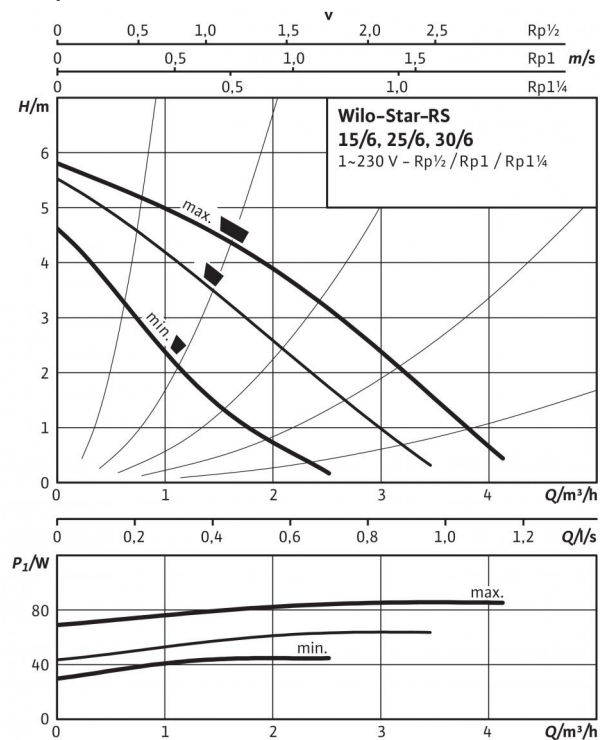
Terminal diagram



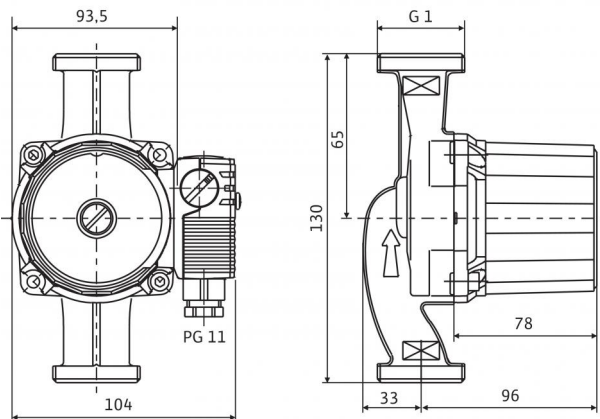
Blocking current-proof motor  
Single-phase motor (EM) 2-pole - 1~230 V, 50 Hz  
With built-in capacitor

## Data sheet: Star-RS 15/6

### Pump curves



### Dimension drawing



Motor horizontal  
Terminal box positions for 3, 6, 9 and 12 o'clock possible  
On delivery, terminal box position is at 3 o'clock

### Approved fluids (other fluids on request)

Heating water (in accordance with VDI 2035)  
Water-glycol mixtures (max. 1:1; above 20% admixture, the pumping data must be checked)

### Permitted field of application

Temperature range at max. ambient temperature +40 °C  
Maximum permissible operating pressure  $P_{max}$

### Pipe connections

Threaded pipe union  
Thread  
Overall length  $L_0$

### Motor/electronics

Electromagnetic compatibility	EN 61800-3
Emitted interference	EN 61000-6-3
Interference resistance	EN 61000-6-2
Speed control	-
Protection class	IP 44
Insulation class	F
Mains connection	1~230 V, 50 Hz
Speed $n$	2480 / 2750 / 2840 rpm
Power consumption $P_1$	43 / 61 / 84 W
Current consumption $I$	0.20 / 0.28 / 0.36 A
Motor protection	Not required (blocking-current proof)
Threaded cable connection $PG$	1x11

### Materials

Pump housing	Grey cast iron (EN-GJL-200)
Impeller	Plastic (PP - 40% GF)
Pump shaft	Stainless steel (X40Cr13)
Bearing	Carbon, metal impregnated

### Minimum suction head at suction port for avoiding cavitation at water pumping

Temperature	
Minimum suction head at 50 / 95 / 110 °C	0.5 / 3 / 10 m

### Information for order placements

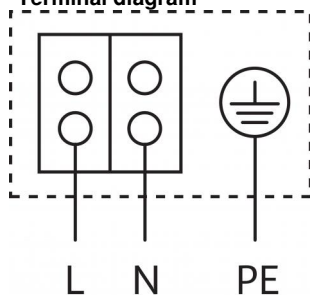
Make	Wilo
Art no.	4063803
Type	Star-RS 15/6
Weight approx. $m$	2.31 kg

Version ...RG with pump housing made of red brass

Version ...L with connection for quick aspirator

## Data sheet: Star-RS 15/6

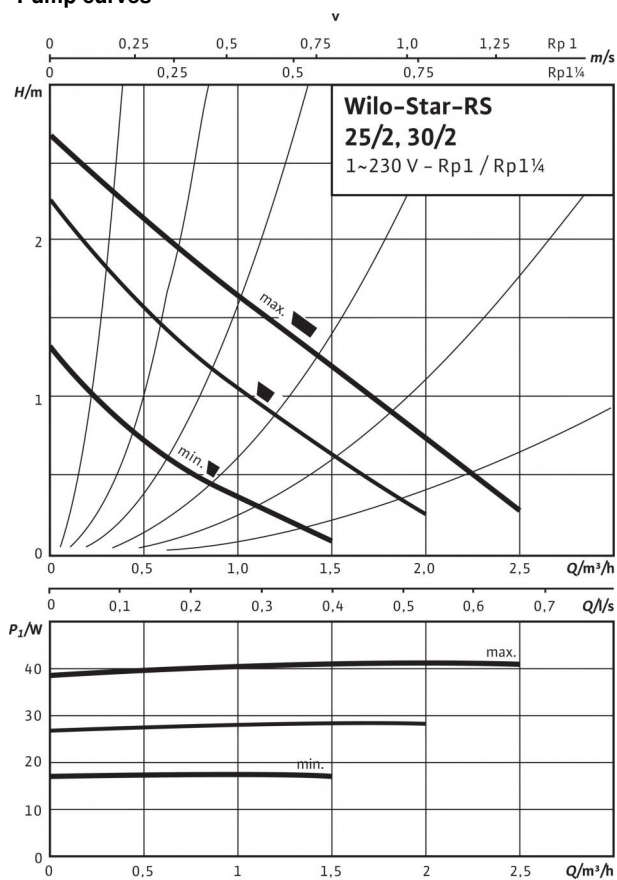
Terminal diagram



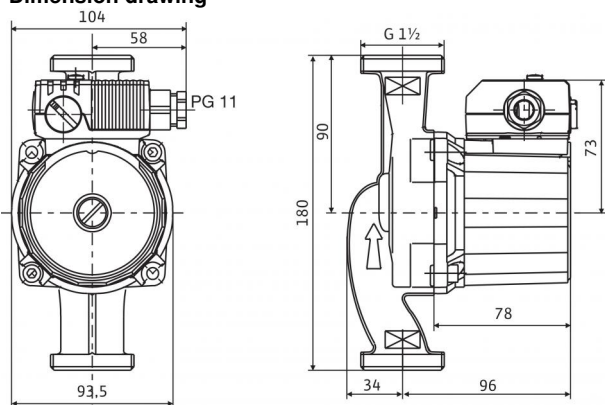
Blocking current-proof motor  
Single-phase motor (EM) 2-pole - 1~230 V, 50 Hz  
With built-in capacitor

## Data sheet: Star-RS 25/2

### Pump curves



### Dimension drawing



Motor horizontal

Terminal box positions for 3, 6, 9 and 12 o'clock possible

### Approved fluids (other fluids on request)

Heating water (in accordance with VDI 2035)

Water-glycol mixtures (max. 1:1; above 20% admixture, the pumping data must be checked)

### Permitted field of application

Temperature range at max. ambient temperature +40 °C

Maximum permissible operating pressure  $P_{max}$

-10...+110 °C

10 bar

### Pipe connections

Threaded pipe union

Thread

Overall length  $L0$

Rp 1

G 1 1/2

180 mm

### Motor/electronics

Electromagnetic compatibility

Emitted interference

Interference resistance

Speed control

Protection class

Insulation class

Mains connection

Speed  $n$

Power consumption  $P_1$

Current consumption  $I$

Motor protection

Threaded cable connection  $PG$

EN 61800-3

EN 61000-6-3

EN 61000-6-2

-

IP 44

F

1~230 V, 50 Hz

1660 / 2210 / 2250 rpm

18 / 30 / 45 W

0.08 / 0.13 / 0.20 A

Not required (blocking-current proof)

1x11

### Materials

Pump housing

Impeller

Pump shaft

Bearing

Grey cast iron (EN-GJL-200)

Plastic (PP - 40% GF)

Stainless steel (X40Cr13)

Carbon, metal impregnated

### Minimum suction head at suction port for avoiding cavitation at water pumping

Temperature  
Minimum suction head at 50 / 95 / 110 °C

0.5 / 3 / 10 m

### Information for order placements

Make

Art no.

Type

Weight approx.  $m$

Wilo

4032952

Star-RS 25/2

2.47 kg

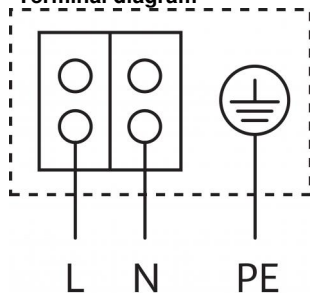
Version ...RG with pump housing made of red brass

Version ...L with connection for quick aspirator



## Data sheet: Star-RS 25/2

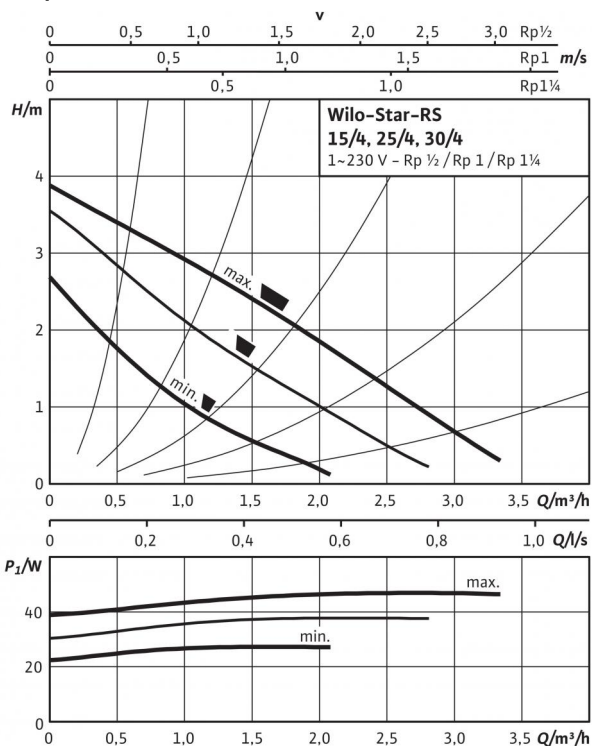
Terminal diagram



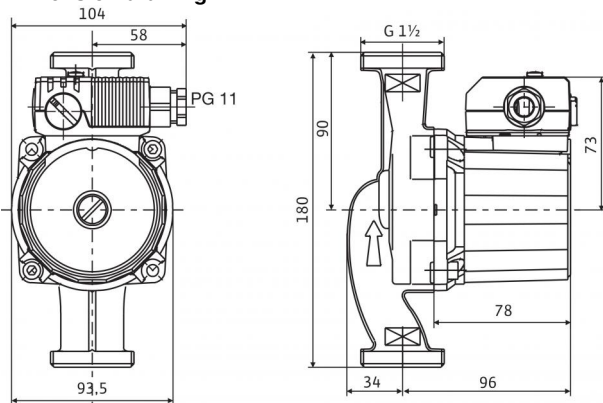
Blocking current-proof motor  
Single-phase motor (EM) 2-pole - 1~230 V, 50 Hz  
With built-in capacitor

## Data sheet: Star-RS 25/4

### Pump curves

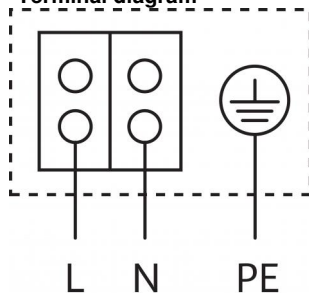


### Dimension drawing



Motor horizontal  
Terminal box positions for 3, 6, 9 and 12 o'clock possible

### Terminal diagram



Blocking current-proof motor  
Single-phase motor (EM) 2-pole - 1~230 V, 50 Hz  
With built-in capacitor

### Approved fluids (other fluids on request)

Heating water (in accordance with VDI 2035)  
Water-glycol mixtures (max. 1:1; above 20% admixture, the pumping data must be checked)

### Permitted field of application

Temperature range at max. ambient temperature +40 °C  
Maximum permissible operating pressure  $P_{max}$

-10...+110 °C  
10 bar

### Pipe connections

Threaded pipe union  
Thread  
Overall length  $L_0$

Rp 1  
G 1 1/2  
180 mm

### Motor/electronics

Electromagnetic compatibility  
Emitted interference  
Interference resistance  
Speed control  
Protection class  
Insulation class  
Mains connection  
Speed  $n$   
Power consumption  $P_1$   
Current consumption  $I$   
Motor protection  
Threaded cable connection PG

EN 61800-3  
EN 61000-6-3  
EN 61000-6-2  
-  
IP 44  
F  
1~230 V, 50 Hz  
2350 / 2630 / 2720 rpm  
28 / 38 / 48 W  
0.13 / 0.17 / 0.21 A  
Not required (blocking-current proof)  
1x11

### Materials

Pump housing  
Impeller  
Pump shaft  
Bearing

Grey cast iron (EN-GJL-200)  
Plastic (PP - 40% GF)  
Stainless steel (X40Cr13)  
Carbon, metal impregnated

### Minimum suction head at suction port for avoiding cavitation at water pumping

Temperature  
Minimum suction head at 50 / 95 / 110 °C

0.5 / 3 / 10 m

### Information for order placements

Make  
Art no.  
Type  
Weight approx.  $m$

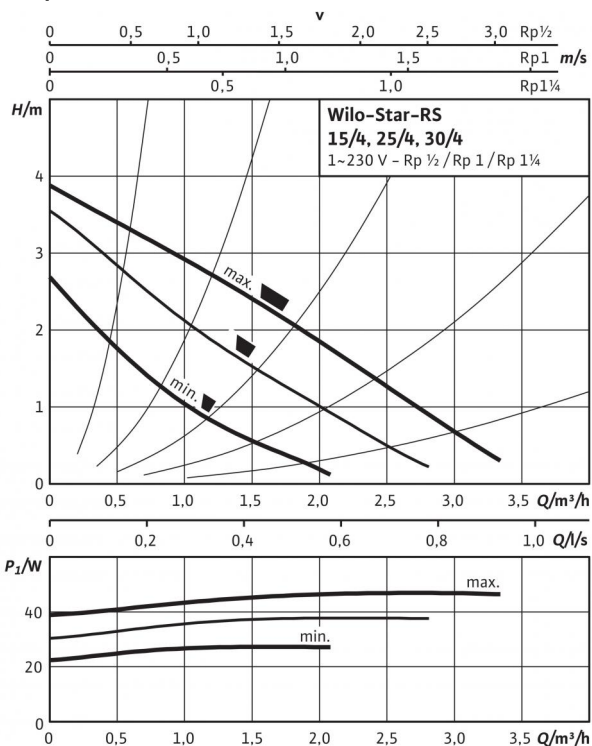
Wilo  
4032954  
Star-RS 25/4  
2.5 kg

Version ...RG with pump housing made of red brass

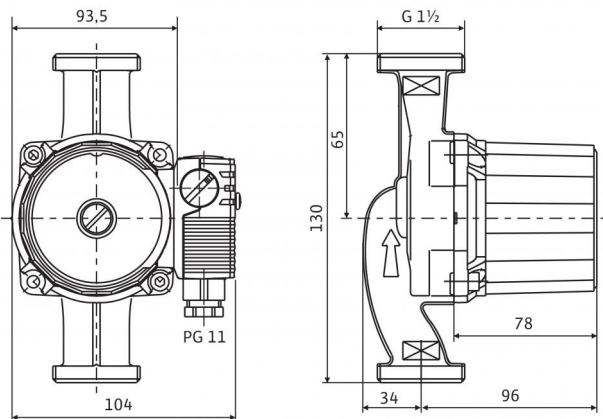
Version ...L with connection for quick aspirator

## Data sheet: Star-RS 25/4-130

### Pump curves



### Dimension drawing



Motor horizontal  
Terminal box positions for 3, 6, 9 and 12 o'clock possible  
On delivery, terminal box position is at 3 o'clock

### Approved fluids (other fluids on request)

Heating water (in accordance with VDI 2035)  
Water-glycol mixtures (max. 1:1; above 20% admixture, the pumping data must be checked)

### Permitted field of application

Temperature range at max. ambient temperature +40 °C  
Maximum permissible operating pressure  $P_{max}$

### Pipe connections

Threaded pipe union  
Thread  
Overall length  $L_0$

### Motor/electronics

Electromagnetic compatibility

Emitted interference

Interference resistance

Speed control

Protection class

Insulation class

Mains connection

Speed  $n$

Power consumption  $P_1$

Current consumption  $I$

Motor protection

Threaded cable connection  $PG$

### Materials

Pump housing

Impeller

Pump shaft

Bearing

### Minimum suction head at suction port for avoiding cavitation at water pumping

Temperature  
Minimum suction head at 50 / 95 / 110 °C

### Information for order placements

Make

Art no.

Type

Weight approx.  $m$

Version ...RG with pump housing made of red brass

Version ...L with connection for quick aspirator

•
•

-10...+110 °C
10 bar

Rp 1
G 1 1/2
130 mm

EN 61800-3
EN 61000-6-3
EN 61000-6-2
-
IP 44
F
1~230 V, 50 Hz
2350 / 2630 / 2720 rpm
28 / 38 / 48 W
0.13 / 0.17 / 0.21 A
Not required (blocking-current proof)
1x11

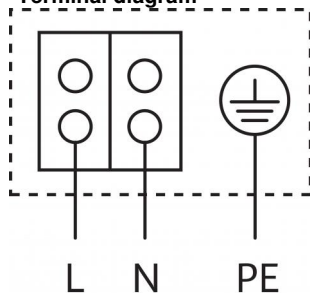
Grey cast iron (EN-GJL-200)
Polypropylene
Stainless steel (X40Cr13)
Carbon, metal impregnated

0.5 / 3 / 10 m
----------------

Wilo
4033776
Star-RS 25/4-130
2.3 kg

Data sheet: Star-RS 25/4-130

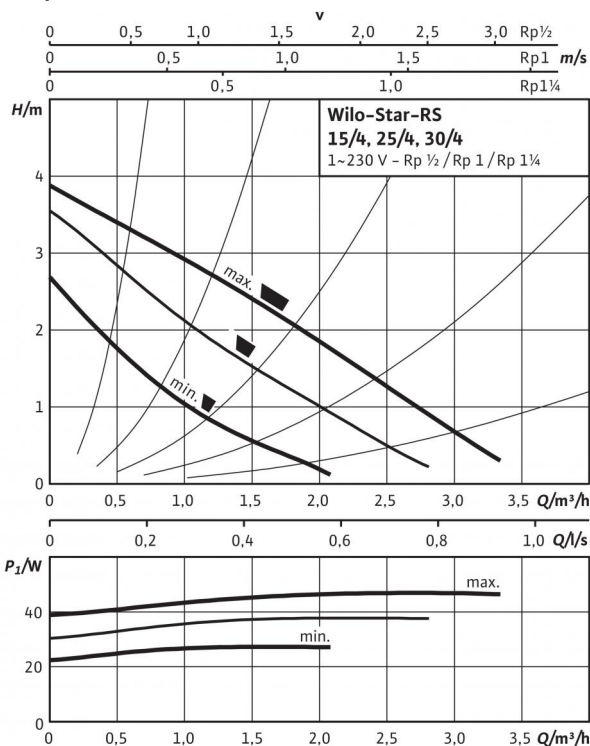
Terminal diagram



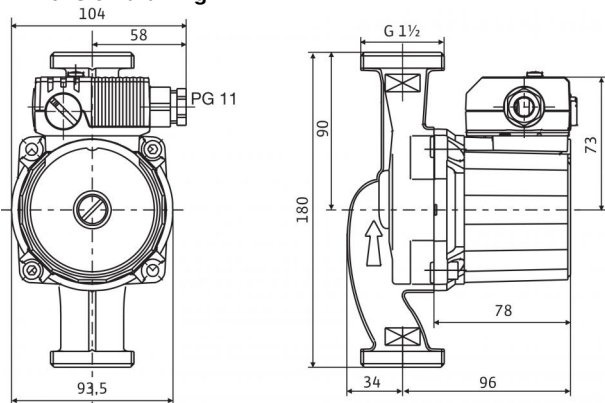
Blocking current-proof motor  
Single-phase motor (EM) 2-pole - 1~230 V, 50 Hz  
With built-in capacitor

## Data sheet: Star-RS 25/4-RG

### Pump curves

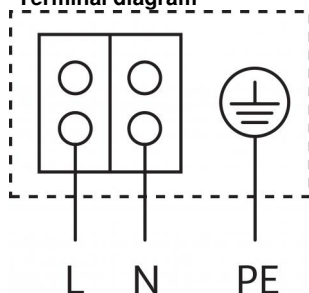


### Dimension drawing



Motor horizontal  
Terminal box positions for 3, 6, 9 and 12 o'clock possible

### Terminal diagram



Blocking current-proof motor  
Single-phase motor (EM) 2-pole - 1~230 V, 50 Hz  
With built-in capacitor

### Approved fluids (other fluids on request)

Heating water (in accordance with VDI 2035)  
Water-glycol mixtures (max. 1:1; above 20% admixture, the pumping data must be checked)

### Permitted field of application

Temperature range at max. ambient temperature +40 °C  
Maximum permissible operating pressure  $P_{max}$  10 bar

### Pipe connections

Threaded pipe union Rp 1  
Thread G 1 1/2  
Overall length  $L_0$  180 mm

### Motor/electronics

Electromagnetic compatibility EN 61800-3  
Emitted interference EN 61000-6-3  
Interference resistance EN 61000-6-2  
Speed control -  
Protection class IP 44  
Insulation class F  
Mains connection 1~230 V, 50 Hz  
Speed  $n$  2350 / 2630 / 2720 rpm  
Power consumption  $P_1$  28 / 38 / 48 W  
Current consumption  $I$  0.13 / 0.17 / 0.21 A  
Motor protection Not required (blocking-current proof)  
Threaded cable connection PG 1x11

### Materials

Pump housing Red brass (CC 499K) according to DIN 50930-6 in accordance with Drinking Water Ordinance  
Impeller Plastic (PP - 40% GF)  
Pump shaft Stainless steel (X40Cr13)  
Bearing Carbon, metal impregnated

### Minimum suction head at suction port for avoiding cavitation at water pumping temperature

Minimum suction head at 50 / 95 / 110 °C 0.5 / 3 / 10 m

### Information for order placements

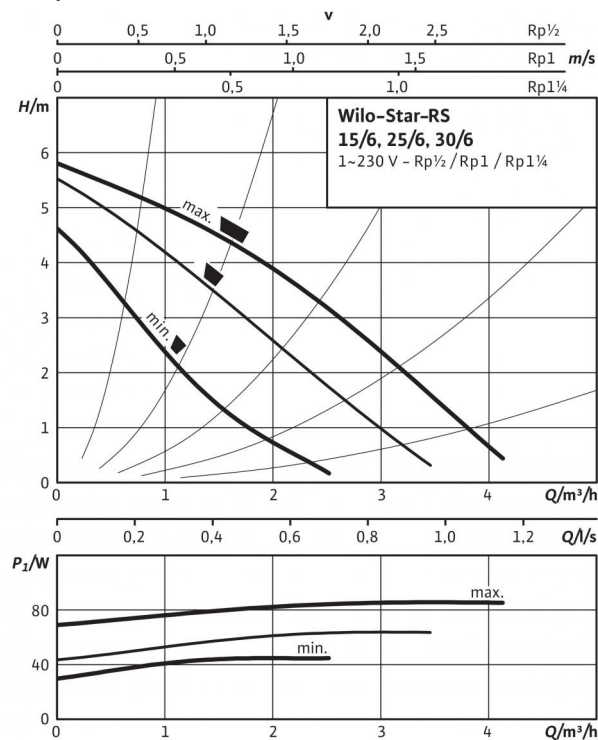
Make Wilo  
Art no. 4035758  
Type Star-RS 25/4-RG  
Weight approx.  $m$  2.7 kg

Version ...RG with pump housing made of red brass

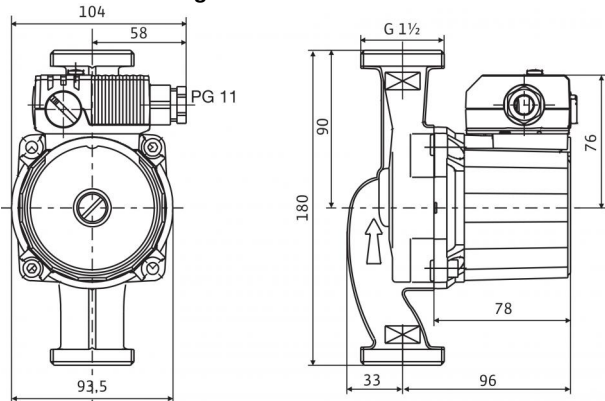
Version ...L with connection for quick aspirator

## Data sheet: Star-RS 25/6

### Pump curves

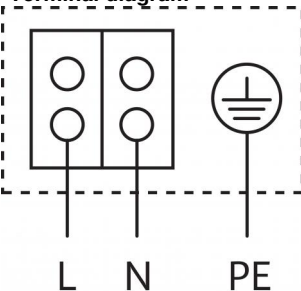


### Dimension drawing



Motor horizontal  
Terminal box positions for 3, 6, 9 and 12 o'clock possible

### Terminal diagram



Blocking current-proof motor  
Single-phase motor (EM) 2-pole - 1~230 V, 50 Hz  
With built-in capacitor

### Approved fluids (other fluids on request)

Heating water (in accordance with VDI 2035)  
Water-glycol mixtures (max. 1:1; above 20% admixture, the pumping data must be checked)

### Permitted field of application

Temperature range at max. ambient temperature +40 °C  
Maximum permissible operating pressure  $P_{max}$

-10...+110 °C  
10 bar

### Pipe connections

Threaded pipe union  
Thread  
Overall length  $L_0$

Rp 1  
G 1½  
180 mm

### Motor/electronics

Electromagnetic compatibility  
Emitted interference  
Interference resistance  
Speed control  
Protection class  
Insulation class  
Mains connection  
Speed  $n$   
Power consumption  $P_1$   
Current consumption  $I$   
Motor protection  
Threaded cable connection PG

EN 61800-3  
EN 61000-6-3  
EN 61000-6-2  
-  
IP 44  
F  
1~230 V, 50 Hz  
2480 / 2750 / 2840 rpm  
43 / 61 / 84 W  
0.20 / 0.28 / 0.36 A  
Not required (blocking-current proof)  
1x11

### Materials

Pump housing  
Impeller  
Pump shaft  
Bearing

Grey cast iron (EN-GJL-200)  
Plastic (PP - 40% GF)  
Stainless steel (X40Cr13)  
Carbon, metal impregnated

### Minimum suction head at suction port for avoiding cavitation at water pumping

Temperature  
Minimum suction head at 50 / 95 / 110 °C

0.5 / 3 / 10 m

### Information for order placements

Make  
Art no.  
Type  
Weight approx.  $m$

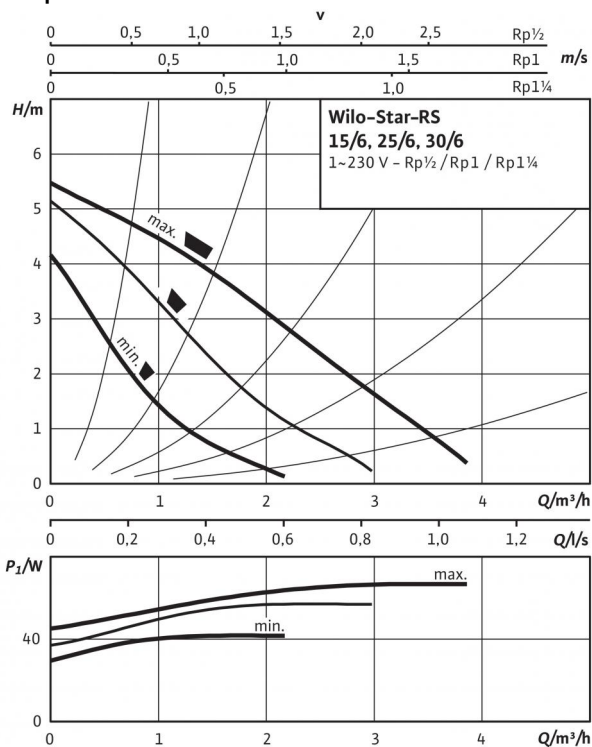
Wilo  
4032956  
Star-RS 25/6  
2.7 kg

Version ...RG with pump housing made of red brass

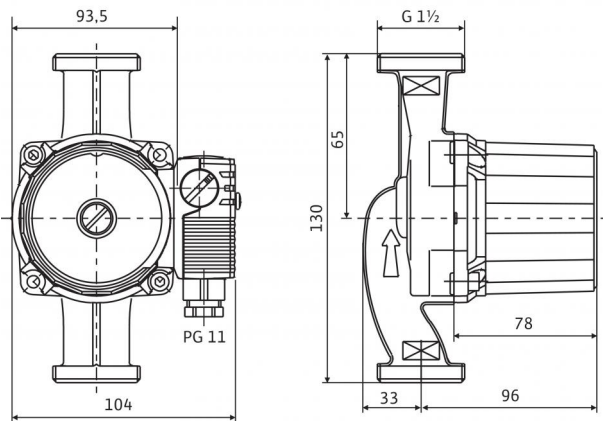
Version ...L with connection for quick aspirator

## Data sheet: Star-RS 25/6-130

### Pump curves



### Dimension drawing



Motor horizontal  
Terminal box positions for 3, 6, 9 and 12 o'clock possible  
On delivery, terminal box position is at 3 o'clock

### Approved fluids (other fluids on request)

Heating water (in accordance with VDI 2035)  
Water-glycol mixtures (max. 1:1; above 20% admixture, the pumping data must be checked)

### Permitted field of application

Temperature range at max. ambient temperature  
+40 °C

Maximum permissible operating pressure  $P_{max}$

### Pipe connections

Threaded pipe union

Thread

Overall length  $L_0$

### Motor/electronics

Electromagnetic compatibility

Emitted interference

Interference resistance

Speed control

Protection class

Insulation class

Mains connection

Speed  $n$

Power consumption  $P_1$

Current consumption  $I$

Motor protection

Threaded cable connection  $PG$

### Materials

Pump housing

Impeller

Pump shaft

Bearing

### Minimum suction head at suction port for avoiding cavitation at water pumping

Temperature  
Minimum suction head at 50 / 95 / 110 °C

### Information for order placements

Make

Art no.

Type

Weight approx.  $m$

Version ...RG with pump housing made of red brass

Version ...L with connection for quick aspirator

•
•

-10...+110 °C
10 bar

Rp 1
G 1½
130 mm

EN 61800-3
EN 61000-6-3
EN 61000-6-2
-
IP 44
F
1~230 V, 50 Hz
2480 / 2750 / 2840 rpm
43 / 61 / 84 W
0.20 / 0.28 / 0.36 A
Not required (blocking-current proof)
1x11

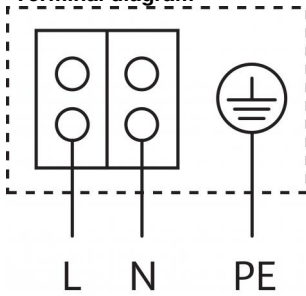
Grey cast iron (EN-GJL-200)
Plastic (PP - 40% GF)
Stainless steel (X40Cr13)
Carbon, metal impregnated

0.5 / 3 / 10 m
----------------

Wilo
4033782
Star-RS 25/6-130
2.48 kg

## Data sheet: Star-RS 25/6-130

Terminal diagram

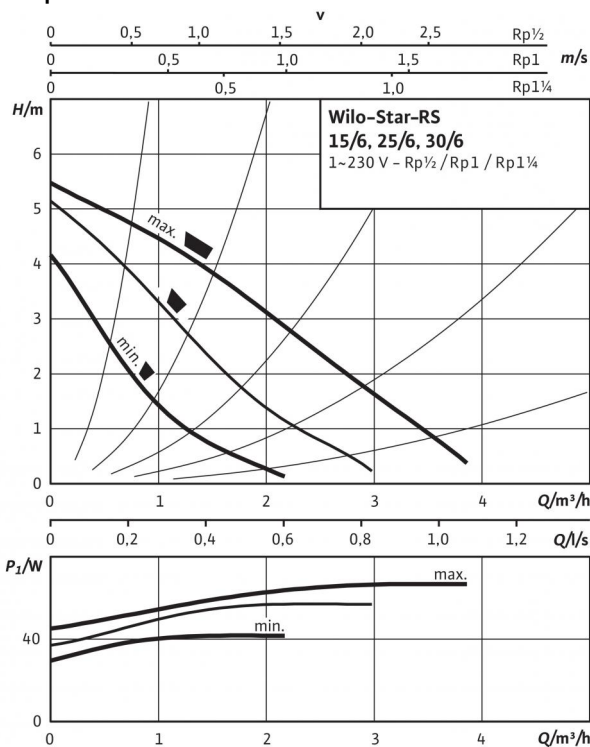


Blocking current-proof motor  
Single-phase motor (EM) 2-pole - 1~230 V, 50 Hz  
With built-in capacitor

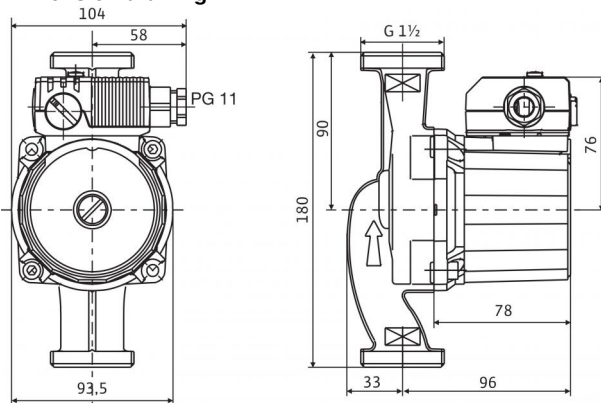


## Data sheet: Star-RS 25/6-RG

### Pump curves

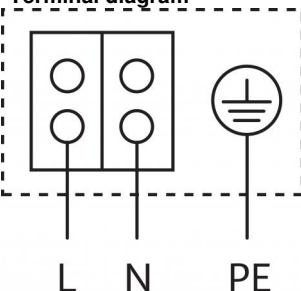


### Dimension drawing



Motor horizontal  
Terminal box positions for 3, 6, 9 and 12 o'clock possible

### Terminal diagram



Blocking current-proof motor  
Single-phase motor (EM) 2-pole - 1~230 V, 50 Hz  
With built-in capacitor

### Approved fluids (other fluids on request)

Heating water (in accordance with VDI 2035)  
Water-glycol mixtures (max. 1:1; above 20% admixture, the pumping data must be checked)

### Permitted field of application

Temperature range at max. ambient temperature +40 °C  
Maximum permissible operating pressure  $P_{max}$

-10...+110 °C  
10 bar

### Pipe connections

Threaded pipe union  
Thread  
Overall length  $L_0$

Rp 1  
G 1½  
180 mm

### Motor/electronics

Electromagnetic compatibility  
Emitted interference  
Interference resistance  
Speed control  
Protection class  
Insulation class  
Mains connection  
Speed  $n$   
Power consumption  $P_1$   
Current consumption  $I$   
Motor protection  
Threaded cable connection PG

EN 61800-3  
EN 61000-6-3  
EN 61000-6-2  
-  
IP 44  
F  
1~230 V, 50 Hz  
2480 / 2750 / 2840 rpm  
43 / 61 / 84 W  
0.20 / 0.28 / 0.36 A  
Not required (blocking-current proof)  
1x11

### Materials

Pump housing  
Impeller  
Pump shaft  
Bearing

Red brass (CC 499K) according to DIN 50930-6 in accordance with Drinking Water Ordinance  
Plastic (PP - 40% GF)  
Stainless steel (X40Cr13)  
Carbon, metal impregnated

### Minimum suction head at suction port for avoiding cavitation at water pumping temperature

Minimum suction head at 50 / 95 / 110 °C

0.5 / 3 / 10 m

### Information for order placements

Make  
Art no.  
Type  
Weight approx.  $m$

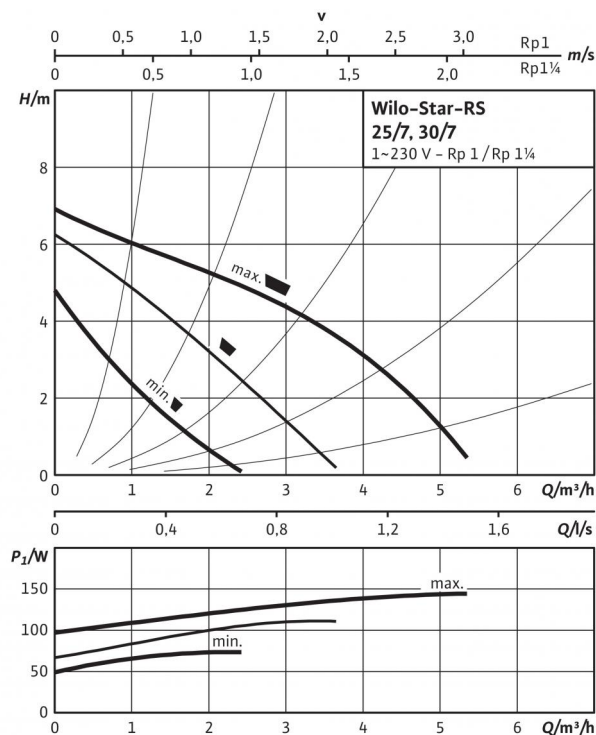
Wilo  
4035761  
Star-RS 25/6-RG  
2.8 kg

Version ...RG with pump housing made of red brass

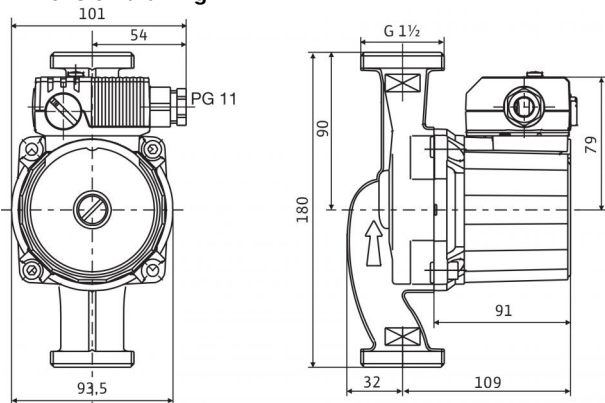
Version ...L with connection for quick aspirator

## Data sheet: Star-RS 25/7

### Pump curves

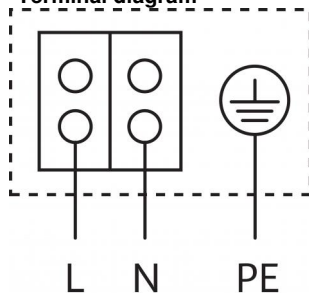


### Dimension drawing



Motor horizontal  
Terminal box positions for 3, 6, 9 and 12 o'clock possible

### Terminal diagram



Blocking current-proof motor  
Single-phase motor (EM) 2-pole - 1~230 V, 50 Hz  
With built-in capacitor

### Approved fluids (other fluids on request)

Heating water (in accordance with VDI 2035)  
Water-glycol mixtures (max. 1:1; above 20% admixture, the pumping data must be checked)

### Permitted field of application

Temperature range at max. ambient temperature +40 °C  
Maximum permissible operating pressure  $P_{max}$

### Pipe connections

Threaded pipe union  
Thread  
Overall length  $L_0$

### Motor/electronics

Electromagnetic compatibility  
Emitted interference  
Interference resistance  
Speed control  
Protection class  
Insulation class  
Mains connection  
Speed  $n$   
Power consumption  $P_1$   
Current consumption  $I$   
Motor protection  
Threaded cable connection PG

•  
•

-10...+110 °C  
10 bar

Rp 1  
G 1½  
180 mm

EN 61800-3  
EN 61000-6-3  
EN 61000-6-2  
-  
IP 44  
F  
1~230 V, 50 Hz  
2300 / 2650 / 2800 rpm  
62 / 92 / 132 W  
0.30 / 0.42 / 0.58 A  
Not required (blocking-current proof)  
1x11

### Materials

Pump housing  
Impeller  
Pump shaft  
Bearing

Grey cast iron  
Fibreglass-reinforced PP  
Stainless steel (X40Cr13)  
Carbon, metal impregnated

### Minimum suction head at suction port for avoiding cavitation at water pumping

Temperature  
Minimum suction head at 50 / 95 / 110 °C

0.5 / 3 / 10 m

### Information for order placements

Make  
Art no.  
Type  
Weight approx.  $m$

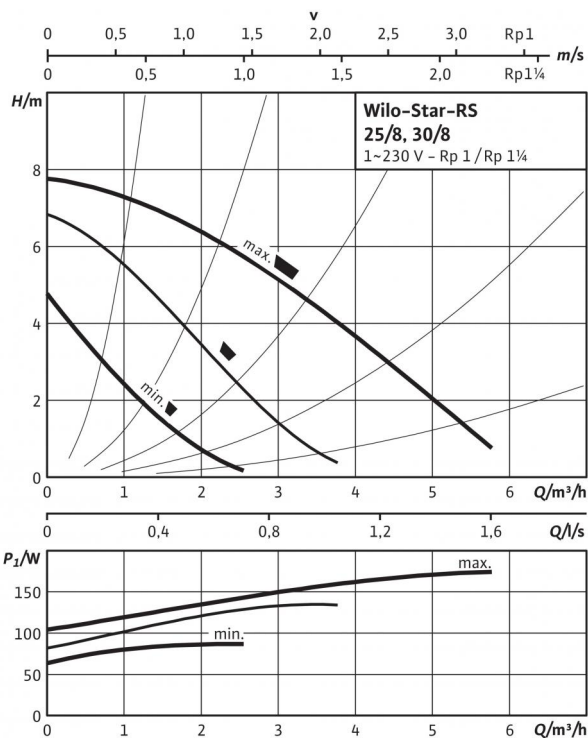
Wilo  
4037310  
Star-RS 25/7  
2.92 kg

Version ...RG with pump housing made of red brass

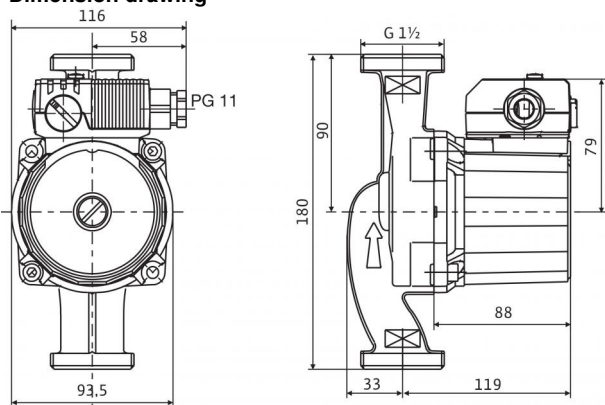
Version ...L with connection for quick aspirator

## Data sheet: Star-RS 25/8

### Pump curves

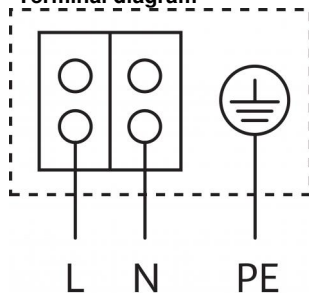


### Dimension drawing



Motor horizontal  
Terminal box positions for 3, 6, 9 and 12 o'clock possible

### Terminal diagram



Blocking current-proof motor  
Single-phase motor (EM) 2-pole - 1~230 V, 50 Hz  
With built-in capacitor

### Approved fluids (other fluids on request)

Heating water (in accordance with VDI 2035)  
Water-glycol mixtures (max. 1:1; above 20% admixture, the pumping data must be checked)

### Permitted field of application

Temperature range at max. ambient temperature +40 °C  
Maximum permissible operating pressure  $P_{max}$

### Pipe connections

Threaded pipe union  
Thread  
Overall length  $L_0$

### Motor/electronics

Electromagnetic compatibility  
Emitted interference  
Interference resistance  
Speed control  
Protection class  
Insulation class  
Mains connection  
Speed  $n$   
Power consumption  $P_1$   
Current consumption  $I$   
Motor protection  
Threaded cable connection PG

•  
•

-10...+110 °C  
10 bar

Rp 1  
G 1½  
180 mm

EN 61800-3  
EN 61000-6-3  
EN 61000-6-2  
-  
IP 44  
F  
1~230 V, 50 Hz  
2122 / 2404 / 2760 rpm  
81 / 113 / 151 W  
0.40 / 0.60 / 0.76 A  
Not required (blocking-current proof)  
1x11

### Materials

Pump housing  
Impeller  
Pump shaft  
Bearing

Grey cast iron  
Fibreglass-reinforced PP  
Stainless steel (X40Cr13)  
Carbon, metal impregnated

### Minimum suction head at suction port for avoiding cavitation at water pumping

Temperature  
Minimum suction head at 50 / 95 / 110 °C

0.5 / 3 / 10 m

### Information for order placements

Make  
Art no.  
Type  
Weight approx.  $m$

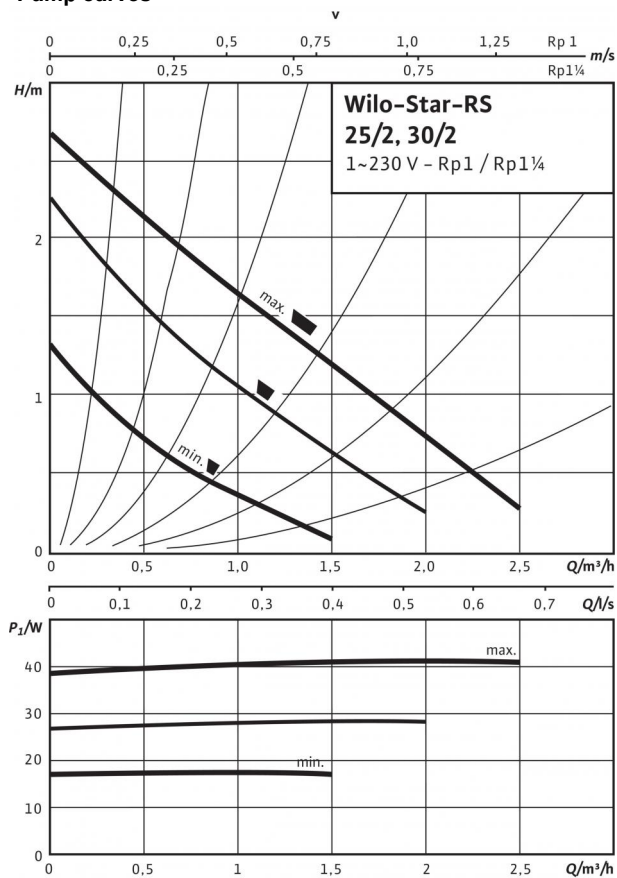
Wilo  
4094258  
Star-RS 25/8  
3.6 kg

Version ...RG with pump housing made of red brass

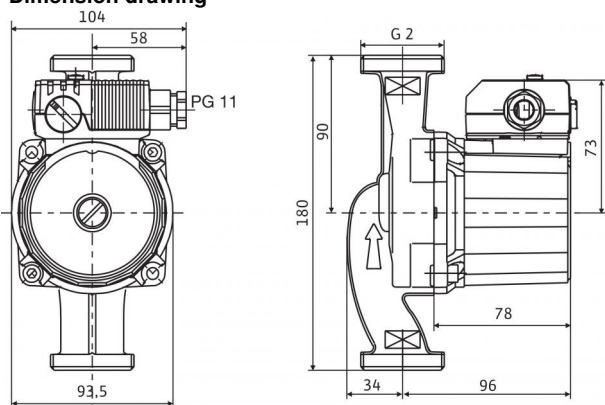
Version ...L with connection for quick aspirator

## Data sheet: Star-RS 30/2

### Pump curves



### Dimension drawing



Motor horizontal

Terminal box positions for 3, 6, 9 and 12 o'clock possible

### Approved fluids (other fluids on request)

Heating water (in accordance with VDI 2035)

Water-glycol mixtures (max. 1:1; above 20% admixture, the pumping data must be checked)

### Permitted field of application

Temperature range at max. ambient temperature +40 °C

Maximum permissible operating pressure  $P_{max}$

-10...+110 °C

10 bar

### Pipe connections

Threaded pipe union

Thread

Overall length  $L_0$

Rp 1 1/4

G 2

180 mm

### Motor/electronics

Electromagnetic compatibility

Emitted interference

Interference resistance

Speed control

Protection class

Insulation class

Mains connection

Speed  $n$

Power consumption  $P_1$

Current consumption  $I$

Motor protection

Threaded cable connection  $PG$

EN 61800-3

EN 61000-6-3

EN 61000-6-2

-

IP 44

F

1~230 V, 50 Hz

1660 / 2210 / 2250 rpm

18 / 30 / 45 W

0.08 / 0.13 / 0.20 A

Not required (blocking-current proof)

1x11

### Materials

Pump housing

Impeller

Pump shaft

Bearing

Grey cast iron (EN-GJL-200)

Plastic (PP - 40% GF)

Stainless steel (X40Cr13)

Carbon, metal impregnated

### Minimum suction head at suction port for avoiding cavitation at water pumping

Temperature

Minimum suction head at 50 / 95 / 110 °C

0.5 / 3 / 10 m

### Information for order placements

Make

Art no.

Type

Weight approx.  $m$

Wilo

4033760

Star-RS 30/2

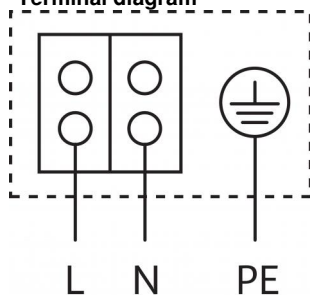
2.66 kg

Version ...RG with pump housing made of red brass

Version ...L with connection for quick aspirator

Data sheet: Star-RS 30/2

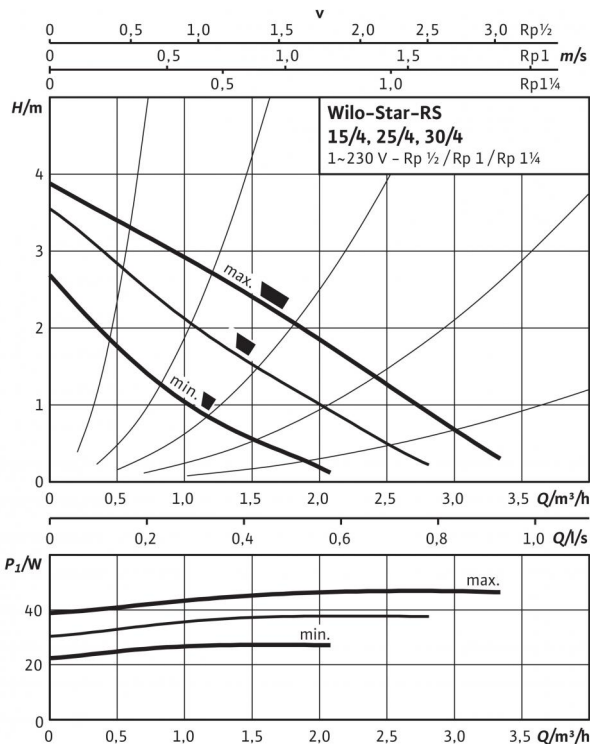
Terminal diagram



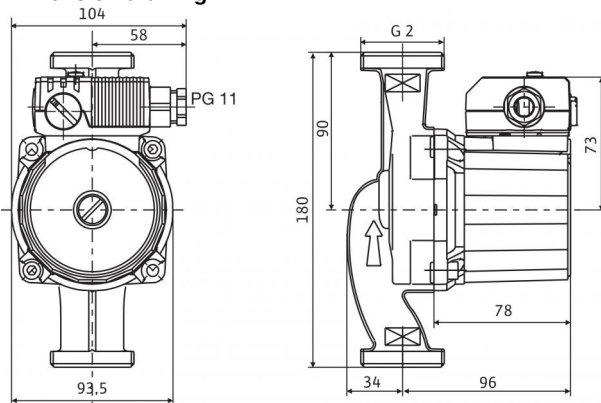
Blocking current-proof motor  
Single-phase motor (EM) 2-pole - 1~230 V, 50 Hz  
With built-in capacitor

## Data sheet: Star-RS 30/4

### Pump curves

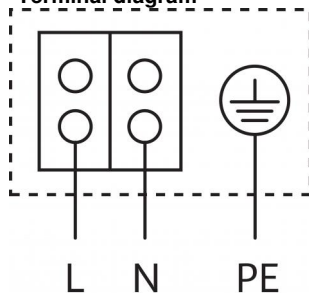


### Dimension drawing



Motor horizontal  
Terminal box positions for 3, 6, 9 and 12 o'clock possible

### Terminal diagram



Blocking current-proof motor  
Single-phase motor (EM) 2-pole - 1~230 V, 50 Hz  
With built-in capacitor

### Approved fluids (other fluids on request)

Heating water (in accordance with VDI 2035)  
Water-glycol mixtures (max. 1:1; above 20% admixture, the pumping data must be checked)

### Permitted field of application

Temperature range at max. ambient temperature +40 °C  
Maximum permissible operating pressure  $P_{max}$

-10...+110 °C  
10 bar

### Pipe connections

Threaded pipe union  
Thread  
Overall length  $L_0$

Rp 1 1/4  
G 2  
180 mm

### Motor/electronics

Electromagnetic compatibility  
Emitted interference  
Interference resistance  
Speed control  
Protection class  
Insulation class  
Mains connection  
Speed  $n$   
Power consumption  $P_1$   
Current consumption  $I$   
Motor protection  
Threaded cable connection PG

EN 61800-3  
EN 61000-6-3  
EN 61000-6-2  
-  
IP 44  
F  
1~230 V, 50 Hz  
2350 / 2630 / 2720 rpm  
28 / 38 / 48 W  
0.13 / 0.17 / 0.21 A  
Not required (blocking-current proof)  
1x11

### Materials

Pump housing  
Impeller  
Pump shaft  
Bearing

Grey cast iron (EN-GJL-200)  
Plastic (PP - 40% GF)  
Stainless steel (X40Cr13)  
Carbon, metal impregnated

### Minimum suction head at suction port for avoiding cavitation at water pumping

Temperature  
Minimum suction head at 50 / 95 / 110 °C

0.5 / 3 / 10 m

### Information for order placements

Make  
Art no.  
Type  
Weight approx.  $m$

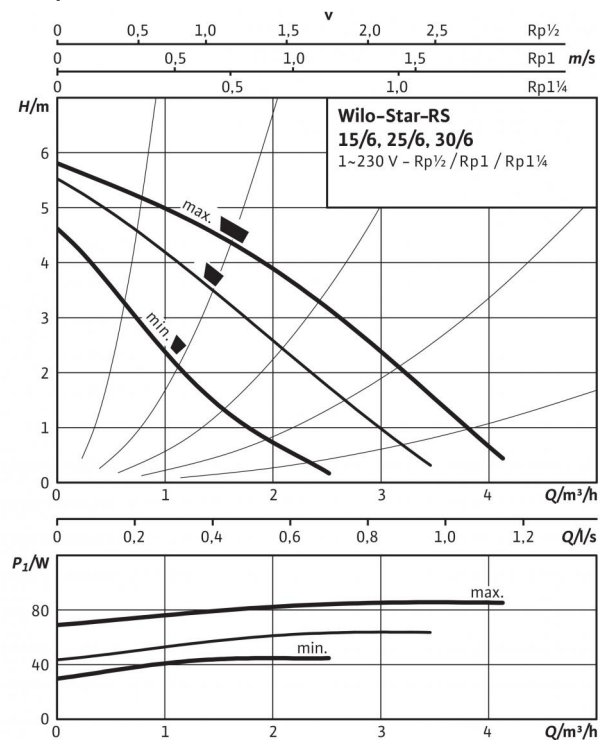
Wilo  
4033765  
Star-RS 30/4  
2.68 kg

Version ...RG with pump housing made of red brass

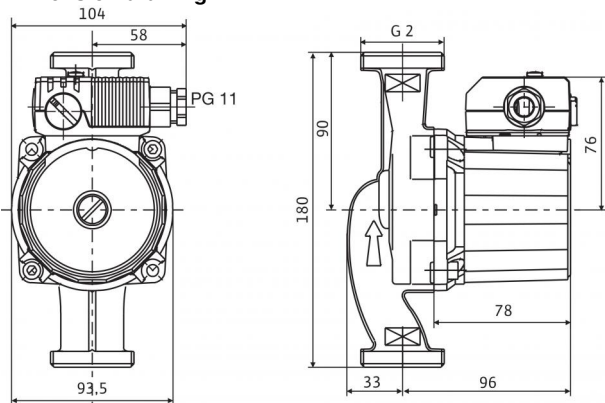
Version ...L with connection for quick aspirator

## Data sheet: Star-RS 30/6

### Pump curves

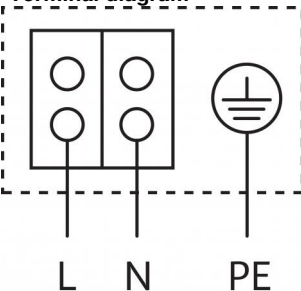


### Dimension drawing



Motor horizontal  
Terminal box positions for 3, 6, 9 and 12 o'clock possible

### Terminal diagram



Blocking current-proof motor  
Single-phase motor (EM) 2-pole - 1~230 V, 50 Hz  
With built-in capacitor

### Approved fluids (other fluids on request)

Heating water (in accordance with VDI 2035)  
Water-glycol mixtures (max. 1:1; above 20% admixture, the pumping data must be checked)

### Permitted field of application

Temperature range at max. ambient temperature +40 °C  
Maximum permissible operating pressure  $P_{max}$

-10...+110 °C  
10 bar

### Pipe connections

Threaded pipe union  
Thread  
Overall length  $L_0$

Rp 1¼  
G 2  
180 mm

### Motor/electronics

Electromagnetic compatibility  
Emitted interference  
Interference resistance  
Speed control  
Protection class  
Insulation class  
Mains connection  
Speed  $n$   
Power consumption  $P_1$   
Current consumption  $I$   
Motor protection  
Threaded cable connection PG

EN 61800-3  
EN 61000-6-3  
EN 61000-6-2  
-  
IP 44  
F  
1~230 V, 50 Hz  
2480 / 2750 / 2840 rpm  
43 / 61 / 84 W  
0.20 / 0.28 / 0.36 A  
Not required (blocking-current proof)  
1x11

### Materials

Pump housing  
Impeller  
Pump shaft  
Bearing

Grey cast iron (EN-GJL-200)  
Plastic (PP - 40% GF)  
Stainless steel (X40Cr13)  
Carbon, metal impregnated

### Minimum suction head at suction port for avoiding cavitation at water pumping

Temperature  
Minimum suction head at 50 / 95 / 110 °C

0.5 / 3 / 10 m

### Information for order placements

Make  
Art no.  
Type  
Weight approx.  $m$

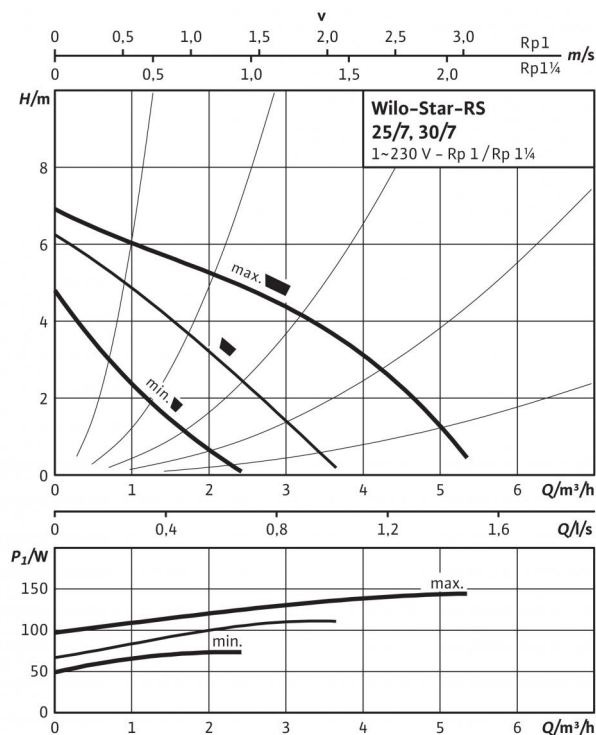
Wilo  
4033770  
Star-RS 30/6  
2.82 kg

Version ...RG with pump housing made of red brass

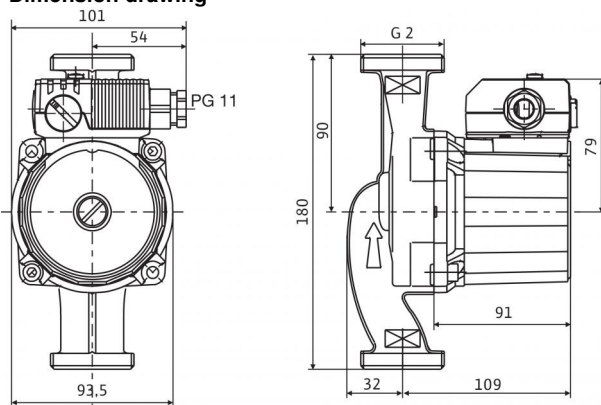
Version ...L with connection for quick aspirator

## Data sheet: Star-RS 30/7

### Pump curves

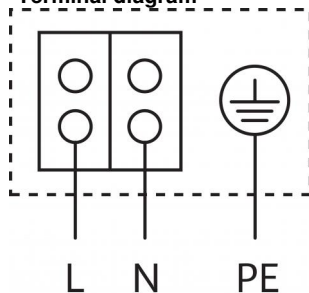


### Dimension drawing



Motor horizontal  
Terminal box positions for 3, 6, 9 and 12 o'clock possible

### Terminal diagram



Blocking current-proof motor  
Single-phase motor (EM) 2-pole - 1~230 V, 50 Hz  
With built-in capacitor

### Approved fluids (other fluids on request)

Heating water (in accordance with VDI 2035)  
Water-glycol mixtures (max. 1:1; above 20% admixture, the pumping data must be checked)

### Permitted field of application

Temperature range at max. ambient temperature +40 °C  
Maximum permissible operating pressure  $P_{max}$

### Pipe connections

Threaded pipe union  
Thread  
Overall length  $L_0$

### Motor/electronics

Electromagnetic compatibility  
Emitted interference  
Interference resistance  
Speed control  
Protection class  
Insulation class  
Mains connection  
Speed  $n$   
Power consumption  $P_1$   
Current consumption  $I$   
Motor protection  
Threaded cable connection PG

•  
•

-10...+110 °C  
10 bar

Rp 1¼  
G 2  
180 mm

EN 61800-3  
EN 61000-6-3  
EN 61000-6-2  
-  
IP 44  
F  
1~230 V, 50 Hz  
2300 / 2650 / 2800 rpm  
68 / 95 / 132 W  
0.30 / 0.42 / 0.58 A  
Not required (blocking-current proof)  
1x11

### Materials

Pump housing  
Impeller  
Pump shaft  
Bearing

Grey cast iron  
Fibreglass-reinforced PP  
Stainless steel (X40Cr13)  
Carbon, metal impregnated

### Minimum suction head at suction port for avoiding cavitation at water pumping

Temperature  
Minimum suction head at 50 / 95 / 110 °C

0.5 / 3 / 10 m

### Information for order placements

Make  
Art no.  
Type  
Weight approx.  $m$

Wilo  
4037311  
Star-RS 30/7  
3 kg

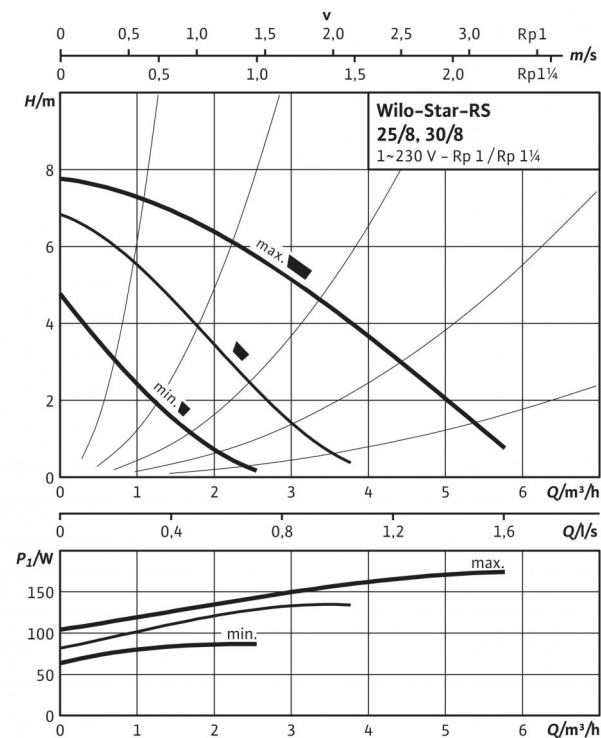
Version ...RG with pump housing made of red brass

Version ...L with connection for quick aspirator

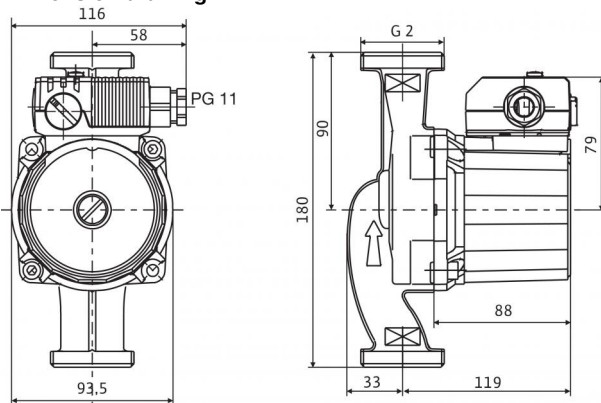


## Data sheet: Star-RS 30/8

### Pump curves

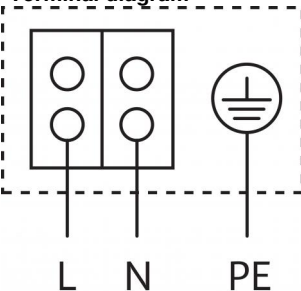


### Dimension drawing



Motor horizontal  
Terminal box positions for 3, 6, 9 and 12 o'clock possible

### Terminal diagram



Blocking current-proof motor  
Single-phase motor (EM) 2-pole - 1~230 V, 50 Hz  
With built-in capacitor

### Approved fluids (other fluids on request)

Heating water (in accordance with VDI 2035)  
Water-glycol mixtures (max. 1:1; above 20% admixture, the pumping data must be checked)

### Permitted field of application

Temperature range at max. ambient temperature +40 °C  
Maximum permissible operating pressure  $P_{max}$

-10...+110 °C  
10 bar

### Pipe connections

Threaded pipe union  
Thread  
Overall length  $L_0$

Rp 1¼  
G 2  
180 mm

### Motor/electronics

Electromagnetic compatibility  
Emitted interference  
Interference resistance  
Speed control  
Protection class  
Insulation class  
Mains connection  
Speed  $n$   
Power consumption  $P_1$   
Current consumption  $I$   
Motor protection  
Threaded cable connection PG

EN 61800-3  
EN 61000-6-3  
EN 61000-6-2  
-  
IP 44  
F  
1~230 V, 50 Hz  
2122 / 2404 / 2760 rpm  
81 / 113 / 151 W  
0.40 / 0.60 / 0.76 A  
Not required (blocking-current proof)  
1x11

### Materials

Pump housing  
Impeller  
Pump shaft  
Bearing

Grey cast iron  
Fibreglass-reinforced PP  
Stainless steel (X40Cr13)  
Carbon, metal impregnated

### Minimum suction head at suction port for avoiding cavitation at water pumping

Temperature  
Minimum suction head at 50 / 95 / 110 °C

0.5 / 3 / 10 m

### Information for order placements

Make  
Art no.  
Type  
Weight approx.  $m$

Wilo  
4094375  
Star-RS 30/8  
3.74 kg

Version ...RG with pump housing made of red brass

Version ...L with connection for quick aspirator